

Figure XXX: Perineuronal nets in dissociated cortical cultures. Double fluorescence immunocytochemistry: nuclear marker 4',6-diamidino-2-phenylindole (DAPI, blue) and *Wisteria floribunda* agglutinin (WFA, green). Dissociated cortical cultures were fixed at 14 days *in vitro*. Cultures incubated first with biotinylated WFA (Sigma, 1:200) and then with avidin AlexaFluor 488 (Invitrogen, 1:200). Cultures were mounted with ProLong Gold Antifade Reagent (Invitrogen) and imaged using a Nikon Eclipse 80i microscope. Scale bar 50 μ m.

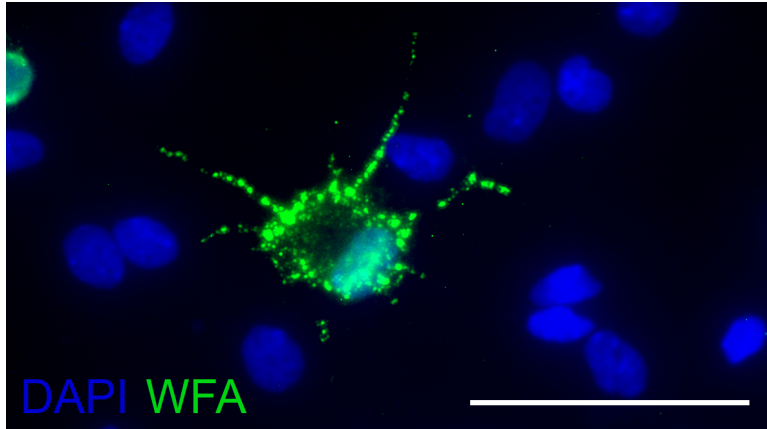


Figure XXX: Perineuronal nets in dissociated cortical cultures. Double fluorescence immunocytochemistry: nuclear marker 4',6-diamidino-2-phenylindole (DAPI, blue) and *Wisteria floribunda* agglutinin (WFA, green). Dissociated cortical cultures were fixed at 14 days *in vitro*. Cultures incubated first with biotinylated WFA (Sigma, 1:200) and then with avidin AlexaFluor 488 (Invitrogen, 1:200). Cultures were mounted with ProLong Gold Antifade Reagent (Invitrogen) and imaged using a Nikon Eclipse 80i microscope. Scale bar 50 μ m.