

General Info

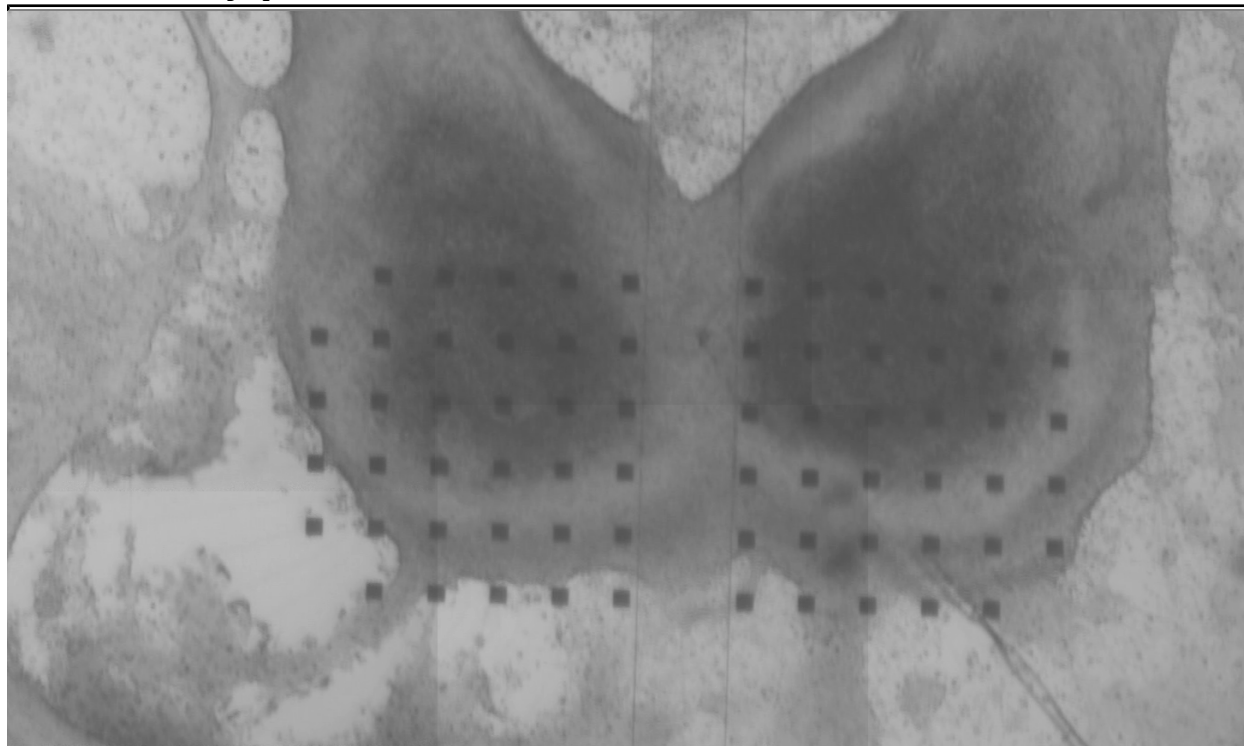
Experiment ID: ex100910_2SpOT.4
Date of Culture: 30 Jul 2010
Type of Culture: 2 Spinal Organotypic
Date of Lesion: 19 Aug 2010
Treatment: Rolipram
Date of Recording: 10 Sep 2010

Recording Settings

Recording Channels: 0, 1, 2, 3, 4, 5, 6, 7, 8, 10, 12, 18, 21, 22, 23, 26, 29, 32, 35, 37, 39, 40, 41, 42, 43, 44, 46, 47, 48, 49, 50, 51, 52, 53, 54, 56, 57, 58, 59, 60, 61, 62, 63

	1		62	59	56		55	52	49		46	
4	2	0	63	60	57		54	51	48	47	45	43
6	5	3	7	61	58		53	50	40	44	42	41
9	10	12	8	18	21		26	29	39	35	37	38
11	13	15	16	19	22		25	28	31	32	34	36
	14		17	20	23		24	27	30		33	

Culture-MEA Photograph

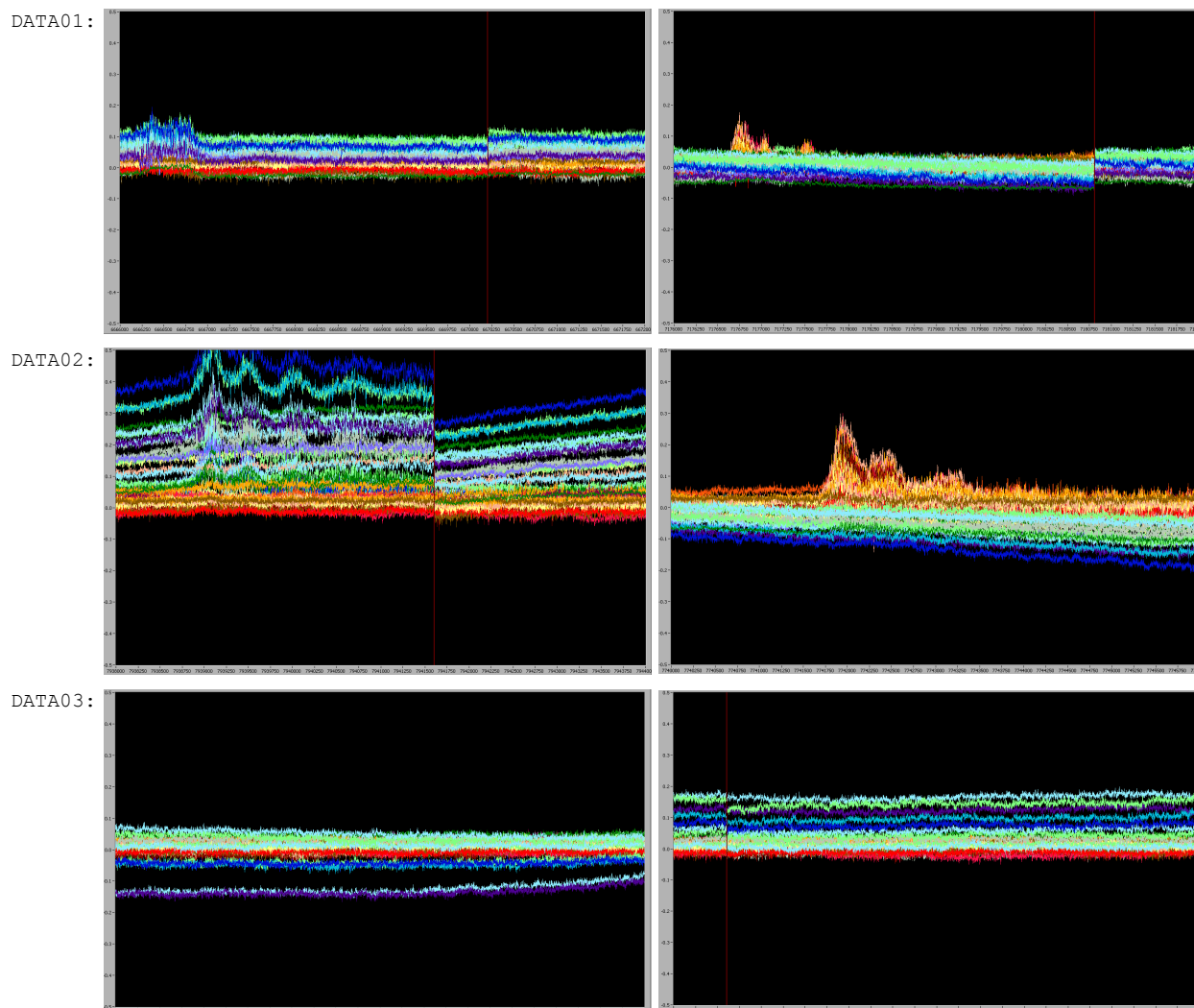


Details

Unless otherwise noted, all recordings were 10min long and saved in the directory D:/mingfaifong/experiments/ex100910_2SpOT.4/

Real Time	Treatment	Filename	Notes
15:11-15:21	normal extracellular solution	DATA0.SCL	this one actually looks like there might be some synchronized activity!
15:21-15:31	normal extracellular solution	DATA01.SCL	recording lots great! very clean data.
15:40-15:50	1uM strychnine, 10uM gabazine	DATA02.SCL	actually, bursting doesn't really look too synchronized. lots of drift with some leftside channels. seem to be more bursts on right.
15:54-16:04	1uM strychnine, 10uM gabazine, 10uM CNQX, 50uM APV	DATA03.SCL	

Screenshots



NOTE: cool colors (green, blue, purple) are traces from electrodes on left side of array; warm colors (red, orange, yellow) are trace from right side

