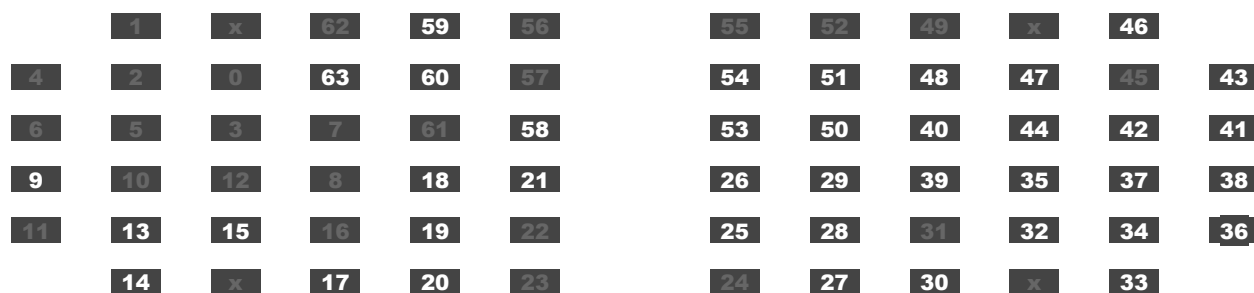


General Info

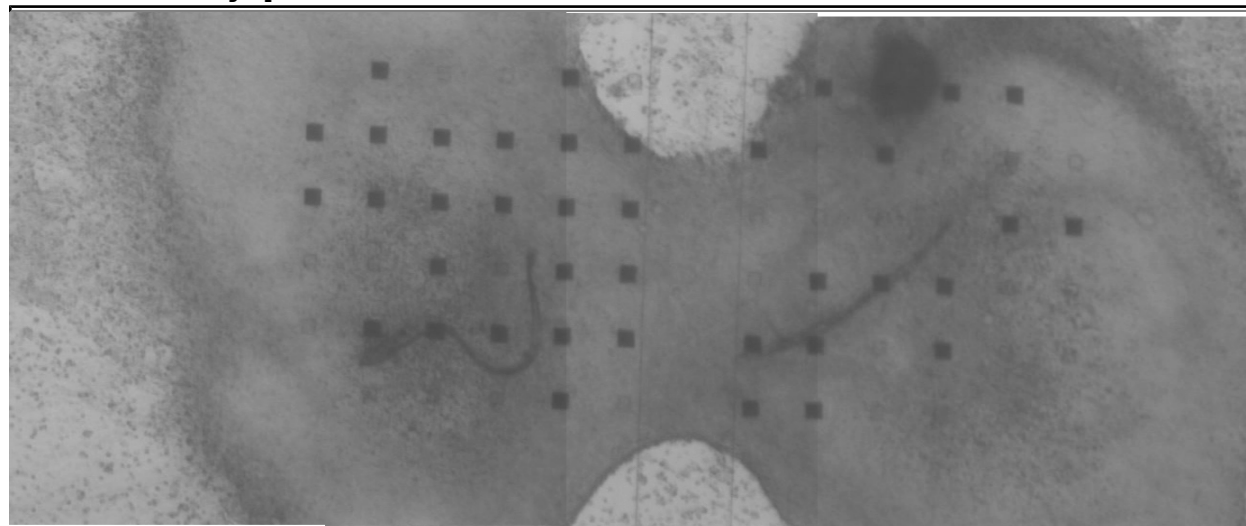
Experiment ID: ex100916_2SpOT.6
 Date of Culture: 27 Aug 2010
 Type of Culture: 2 Spinal Organotypic
 Date of Lesion: 31 Aug 2010
 Treatment: none
 Date of Recording: 16 Sep 2010

Recording Settings

Recording Channels: 9, 13, 14, 15, 17, 18, 19, 20, 21, 25, 26, 27, 28, 29, 30, 32, 33, 34, 35, 36, 37, 38, 39, 40, 41, 42, 43, 44, 46, 47, 50, 51, 53, 54, 58, 59, 60, 63



Culture-MEA Photograph



Details

Unless otherwise noted, all recordings were 10min long and saved in the directory D:/mingfaifong/experiments/ex100916_2SpOT.6/

Real Time	Treatment	Filename	Notes
15:06-15:16	normal extracellular solution	DATA0.SCL	highly correlated; it appears to be a right-to-left correlation
15:16-15:26	normal extracellular solution	DATA01.SCL	the slow wave offset is pretty ridiculous.
17:41-17:51	1uM strychnine, 10uM gabazine	DATA02.SCL	
17:55-18:05	1uM strychnine, 10uM gabazine, 10uM CNQX, 50uM APV	DATA03.SCL	