

General Info

Experiment ID: ex100920_2SpOT.3
 Date of Culture: 27 Aug 2010
 Type of Culture: 2 Spinal Organotypic
 Date of Lesion: 31 Aug 2010
 Treatment: none
 Date of Recording: 20 Sep 2010

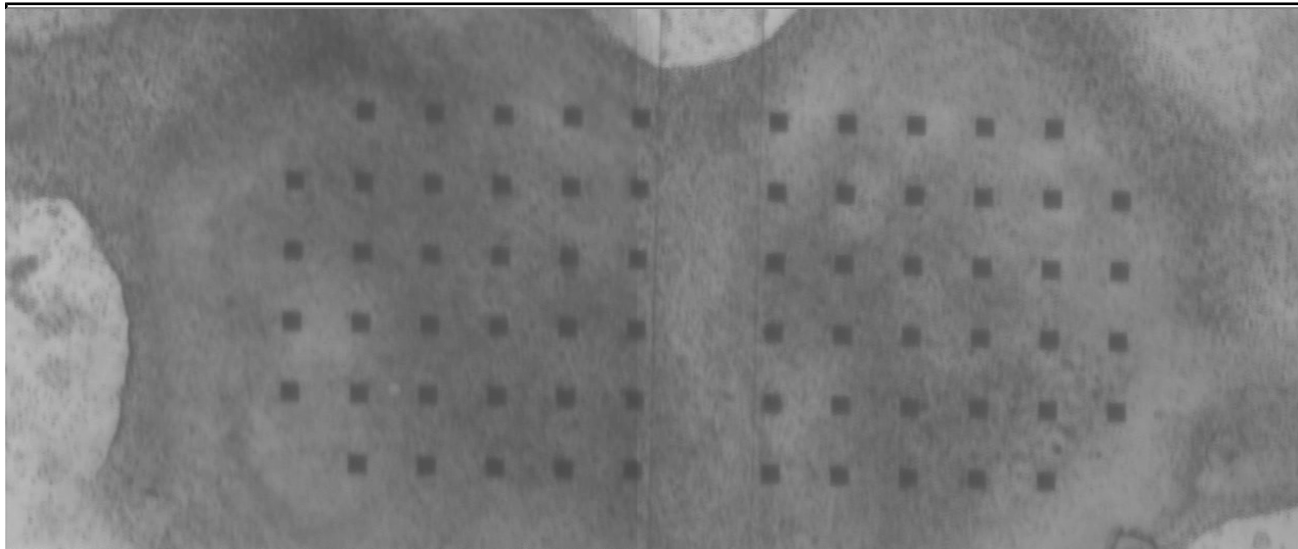
Recording Settings

Recording Channels: 3,4,6,7,9,10,13,15,17,18,19,20,21,22,23,24,25,26,27,28,29,32,33,34,35,36,37,38,39,40,41,42,43,44,45,46,47,48,49,50,51,52,53,54,55,56,57,58,59,60,61,62,63

	1	x	62	59	56		55	52	49	x	46	
4	2	0	63	60	57		54	51	48	47	45	43
6	5	3	7	61	58		53	50	40	44	42	41
9	10	12	8	18	21		26	29	39	35	37	38
11	13	15	16	19	22		25	28	31	32	34	36
	14	x	17	20	23		24	27	30	x	33	

These channels look great! One of the first ones in a while where I've had more activity on left side than right.

Culture-MEA Photograph

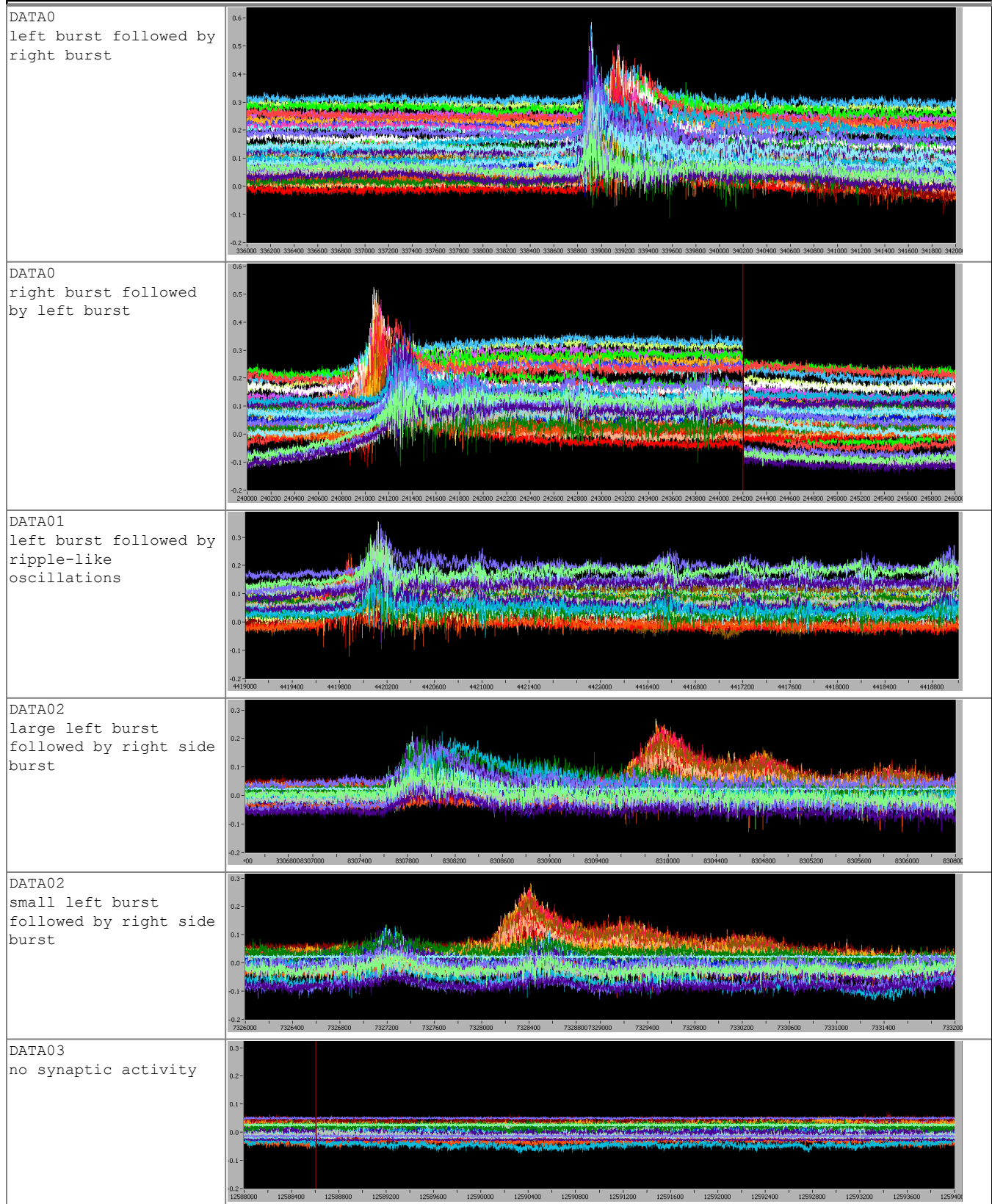


Details

Unless otherwise noted, all recordings were 10min long and saved in the directory D:/mingfaifong/experiments/ex100920_2SpOT.3/

Real Time	Treatment	Filename	Notes
	normal extracellular solution	DATA0.SCL	highly correlated
	normal extracellular solution	DATA01.SCL	lots of post-burst oscillations on left side
	1uM strychnine, 10uM gabazine	DATA02.SCL	lost channel 10; seems like left bursts almost always are followed by right side bursts, but not so much vice versa
20:15-20:25	1uM strychnine, 10uM gabazine, 10uM CNQX, 50uM APV	DATA03.SCL	lost several more left side channels (4, 6, 9, 3, 10)

Screenshots



NOTE: voltage and time scales are identical for each plot