

General Info

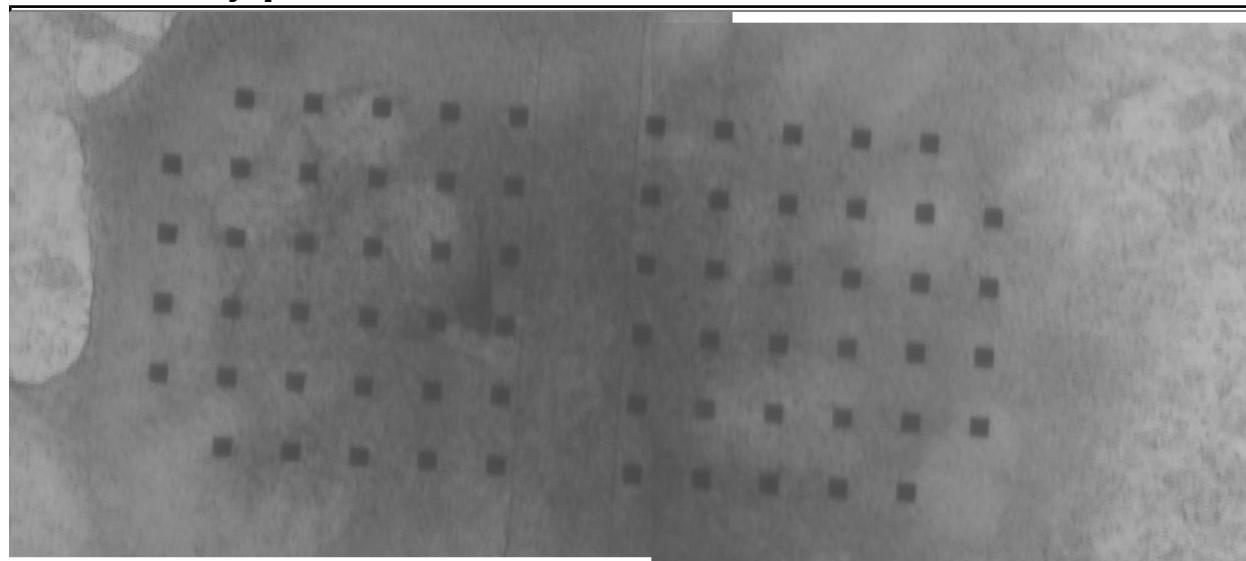
Experiment ID: ex100923_2SpOT.2
 Date of Culture: 18 Aug 2010
 Type of Culture: 2 Spinal Organotypic
 Drug Applied: TTX
 Date & Time Applied: 21-Sep-2010, 15:00
 Date & Time of Recording: 23-Sep-2010, 17:02

Recording Settings

Recording Channels: 3, 4, 6, 8, 9, 10, 11, 14, 15, 17, 18, 19, 20, 21, 22, 24, 25, 26, 27, 28, 29, 30, 32, 33, 34, 35, 36, 37, 38, 39, 40, 41, 42, 43, 44, 45, 46, 47, 48, 49, 50, 51, 52, 53, 54, 55, 57, 58, 59, 60, 61, 62, 63

	1	x	62	59	56		55	52	49	x	46	
4	2	0	63	60	57		54	51	48	47	45	43
6	5	3	7	61	58		53	50	40	44	42	41
9	10	12	8	18	21		26	29	39	35	37	38
11	13	15	16	19	22		25	28	31	32	34	36
	14	x	17	20	23		24	27	30	x	33	

Culture-MEA Photograph



Details

Unless otherwise noted, all recordings were 10min long and saved in the directory D:/mingfaifong/experiments/ex100923_2SpOT.2/

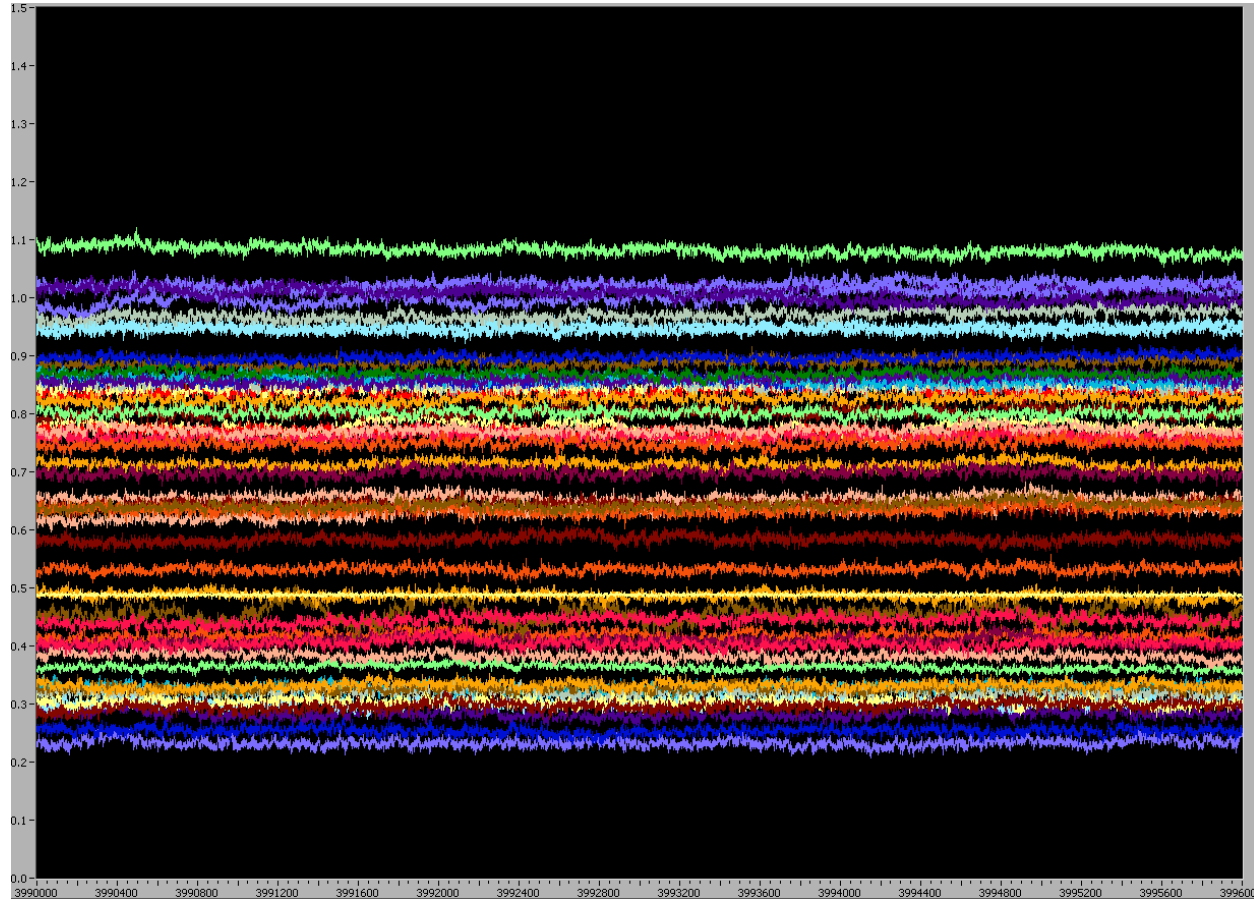
Real Time	Treatment	Filename	Notes
17:02-17:12	0.5uM TTX	DATA0.SCL	took a while to get good channels. settled on a distribution that missed about
17:30-17:40	normal extracellular solution	DATA01.SCL	didn't both to do two initial recordings because i messed around with this guy a lot in the beginning to try to get more channels, so it's been in recording solution for a while. also, i'm now doing a 5-minute 0.5uM TTX section at the end for spike detection validation.

			washed three times, 3 rinses per wash, 5-7min between washes; saw bursting come back after second wash but did a third anyway
17:44-17:54	normal extracellular solution	DATA02.SCL	I got a bit paranoid that the washes didn't completely remove the TTX because bursts were still pretty low amplitude and i didn't see any uncorrelated spiking... so i washed again and will do two more 10 min recordings. Burst amplitude is higher and I'm seeing more spiking outside of bursts.
17:56-18:06	normal extracellular solution	DATA03.SCL	Still looks good! I'm happy I decided to do that fourth wash.
18:05-18:15	0.5uM TTX	DATA04.SCL	nada

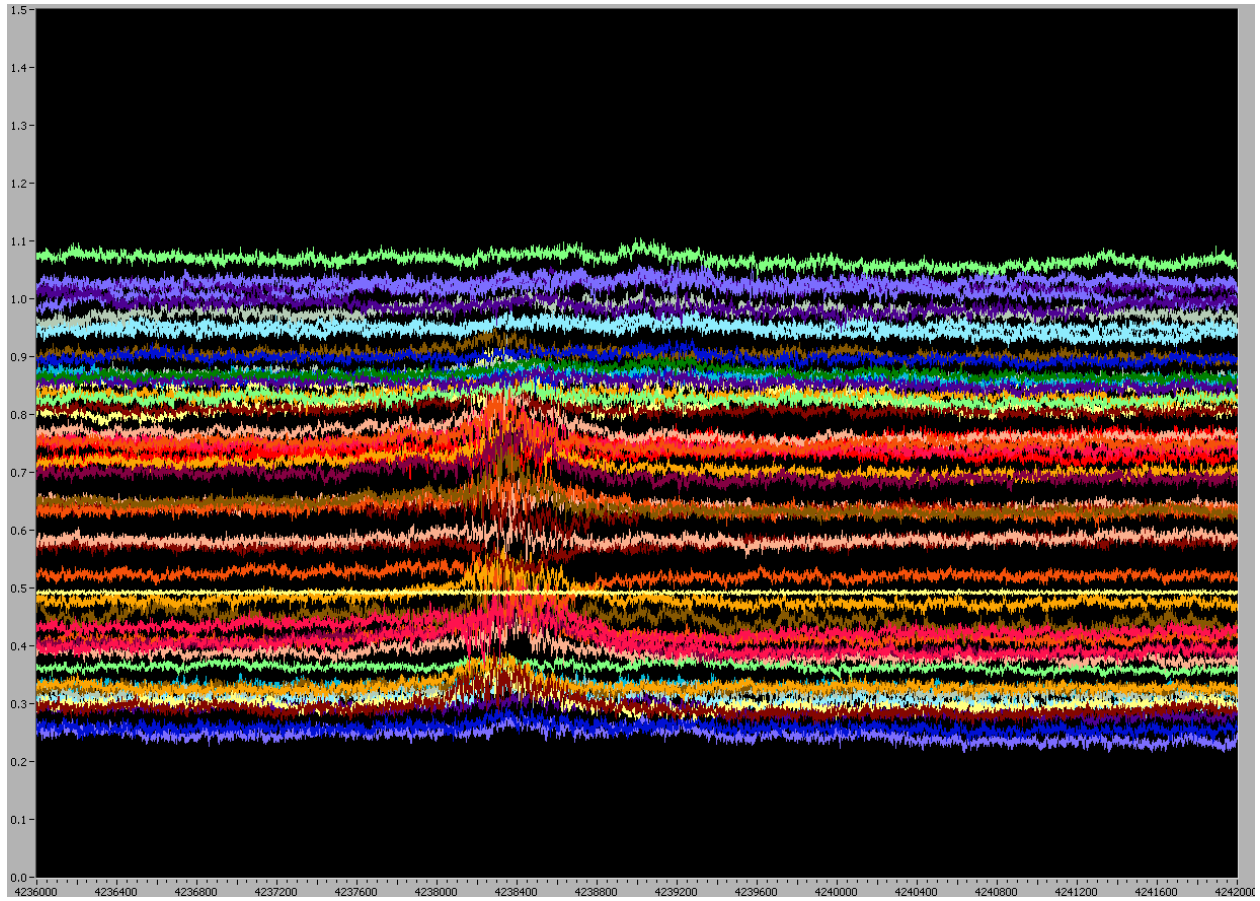
Screenshots

I took some screenshots to document how the culture was behaving after each TTX wash.

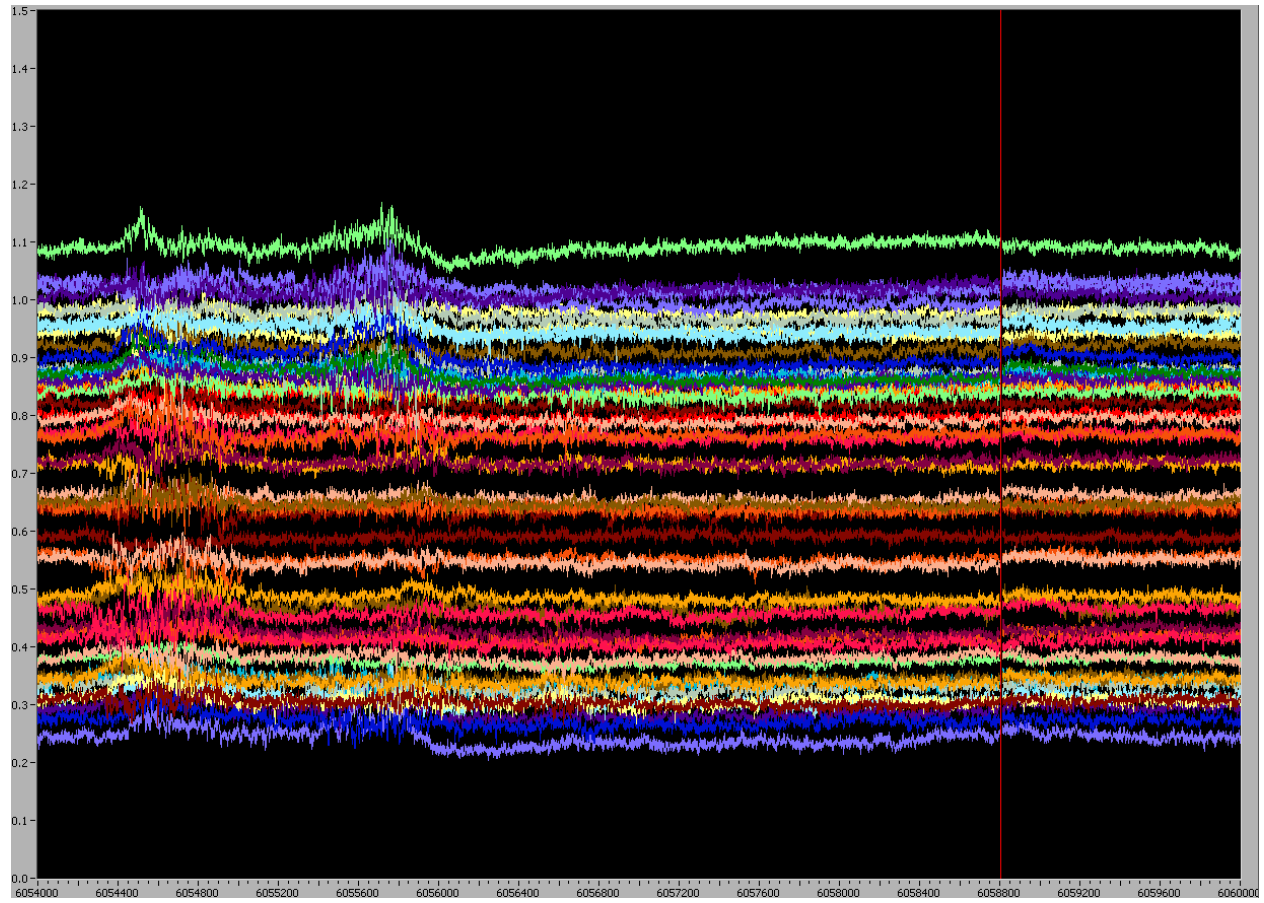
after wash #1:



after wash #2:



after wash #3:



after wash #4:

